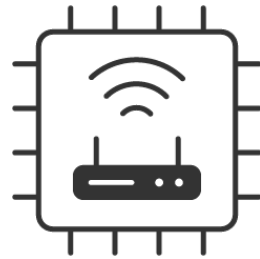


# BellaDati IoT Framework



**BellaDati**



A dramatic sky with lightning and rainbows over a forest. The sky is filled with dark, stormy clouds, with bright white lightning bolts striking down. Two vibrant rainbows are visible, one on the left and one on the right, arching across the sky. The foreground shows a dense forest of green trees under a dark, overcast sky.

Focus on IoT product deployment.  
Eliminate IoT project integration.

# How IoT product is built today



Always custom-made project integrated from many different systems



Endless hours of integration even when systems come from single vendor

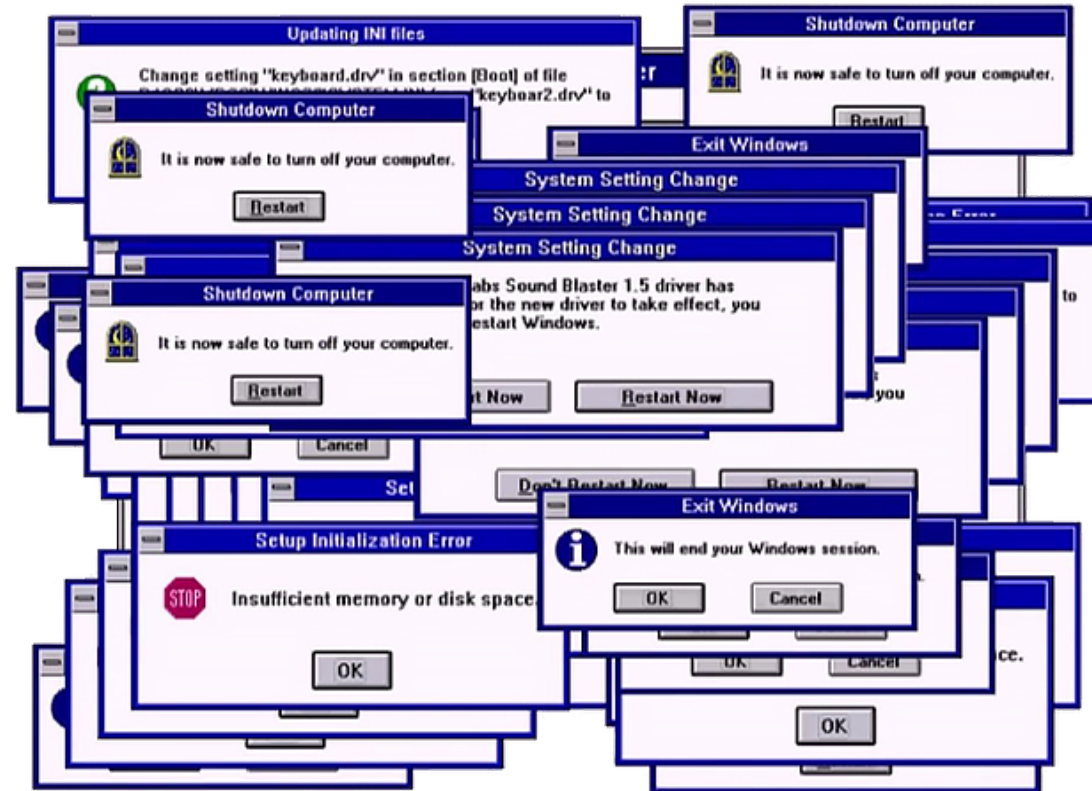


Large budgets are needed. Each IoT project is custom made = **high risk of new bugs**



No single framework that would unite all standard parts of IoT product

Today IoT projects are a bit complex. Just like the era of 90's, when OS still did not embrace more general integration of hardware out-of-the box.



# IoT product must have



Software for IoT gates & sensors



Integration with data warehouse



Integration with data analytics



Integration with machine learning



User management and single sign-on



Web, mobile and or desktop application

# For IoT application producer BellaDati IoT Framework covers all IoT product backend. Focus on your app!

## BellaDati IoT SDK



- Build your IoT web, mobile, desktop app
- use SDK(Java, C#, Swift etc.), JavaScript Extension API or REST API
- Relay on BellaDati IoT Framework
- IoT Framework maintained for 1MIL + users

## BellaDati Analytics



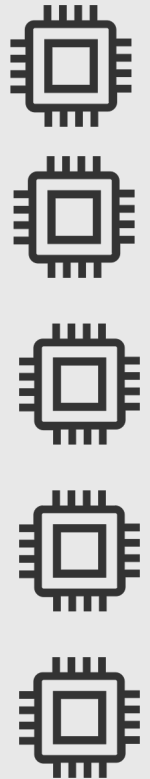
- Agile BI
- Machine Learning
- Data Warehouse
- User Management

## BellaDati IoT Collector

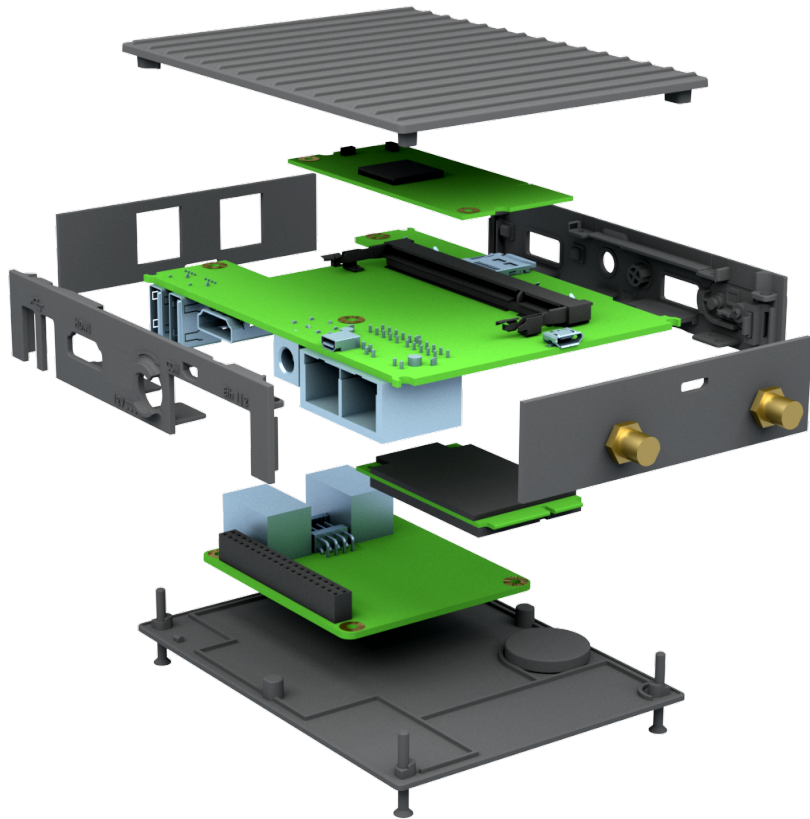


- Non locking threads
- Full utilization of CPU cores
- Controls sensors, servo motors etc.
- Harvests data in real time trough MQTT,LORA etc.

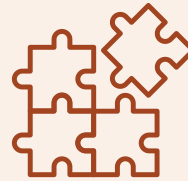
1000+ sensors



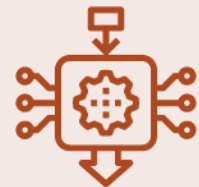
# BellaDati IoT Collector for IoT gate producers



Bundle IoT collector alongside Linux or Windows IoT OS

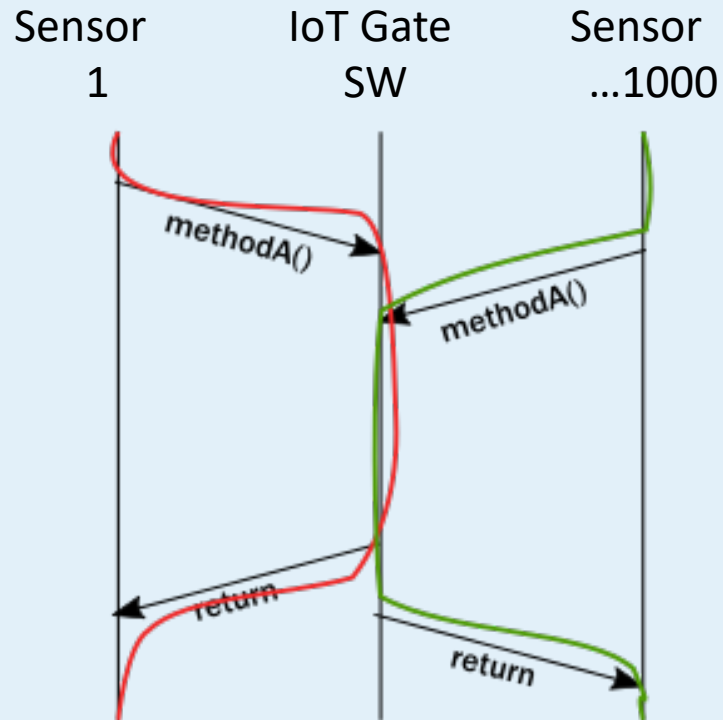


Enable customer with pre-integrated IoT framework to jumpstart their IoT application deployment

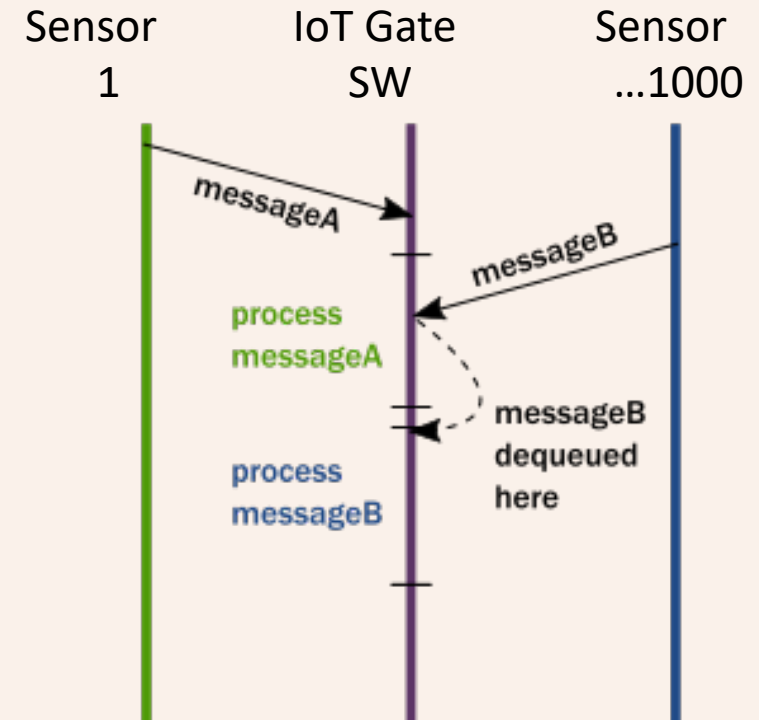


Non-locking and message-based communication, fully utilize CPU power of the IoT gate

# Why BellaDati IoT Collector non-locking, message-based data processing rocks? It fully utilizes power of IoT gate CPUs!



**Locking based approach.** Only one sensor execution thread can access Gate object at time. This makes CPUs idle. Data harvesting is not real-time and slow.



**Message based approach. The BellaDati IoT Collector solution** is aligned with approach how CPU cores communicate. CPU does not have to wait. Data harvesting is fast, real-time.