

BellaDati Training - Intro



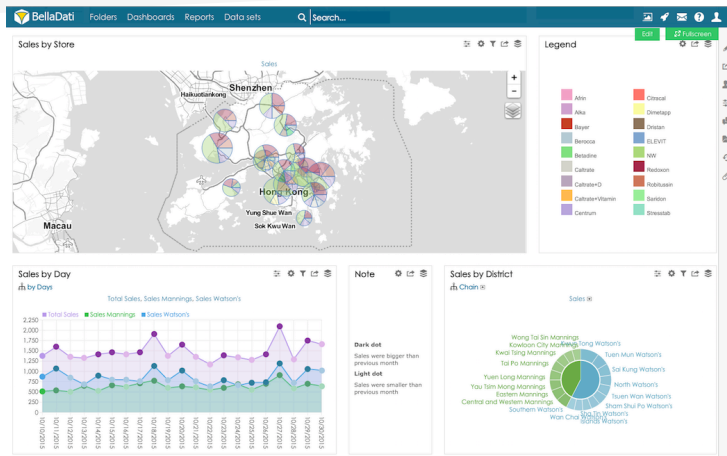
Agenda

- **Product introduction, resources**
 - BellaDati key features
- **Product introduction, resources**
 - Report
 - Dashboard
 - Data
- **Users, user groups**
 - Creating, managing, deleting
- **Permission model**

Agenda

- **Domain**
 - customization
 - backup & restore

BellaDati Product



- BellaDati is an agile BI system
- Built-in data warehouse
- Connective to standard data sources (SQL, FTP, URL, ...) and big-data engines (MongoDB, Hadoop platform)
- Completely running in your web browser
- Available on smartphones and tablets
- Running as a cloud service and installable on-premise

Documentation

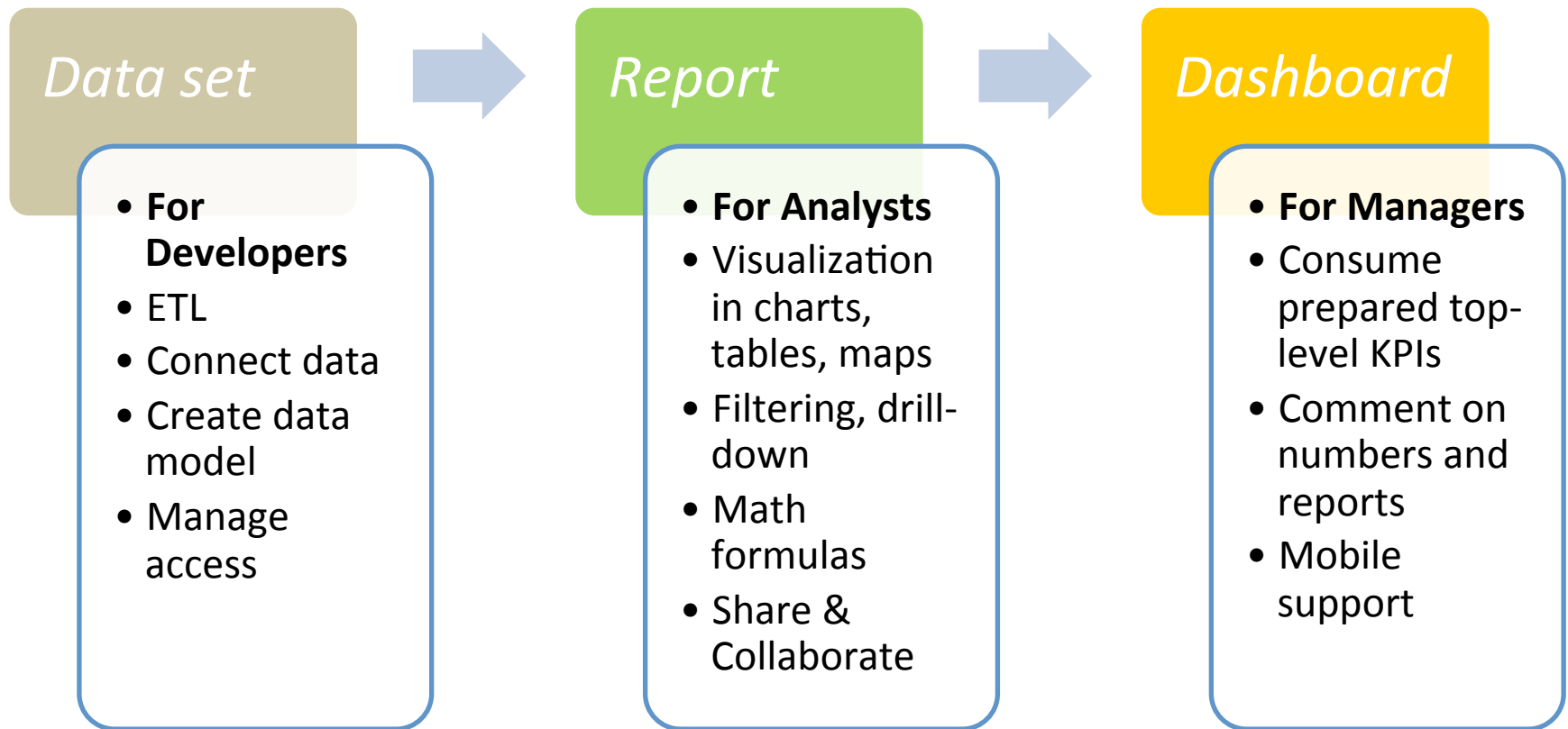
- visit our website

<http://www.belladati.com>

- general support, documentation, video tutorials:

<http://support.belladati.com>

Basic concept



BellaDati Key Features

Visualization and agile reporting

- flexible and interactive layouts working in all major web browsers
- 5 view types to display – chart, table, KPI, maps, custom
- over 250 charts combinations
- GEO maps support
- in-report custom KPI definitions
- scripting support for advanced formulas, code editors
- analytical operations support - drill-down, drill-through

BellaDati Key Features

Collaboration and sharing

- share online and offline with your colleagues
- embed or just send the chart link
- comment directly on numbers in tables and charts
- run conversation and receive notifications
- track changes on your dashboard

BellaDati Key Features

Mobile extension for smart phones & tablets

- oriented on consumers (managers)
- basic filters and data interval settings
- offline & online mode
- stay in touch with your team
- on Apple AppStore and Google Play

BellaDati Key Features

Ready-made connectors & REST API

- automated upload from FTP, URL, SQL databases or SOAP web services
- support for over 100 SQL databases
- support for online services like Google, Salesforce
- connectivity to social networks - Twitter, Facebook
- build your own connector using the REST API
- visit <http://dev.belladati.com>

BellaDati Key Features

BellaDati extensibility

- Whitelabeling – rebrand BellaDati according to your preferred look & feel
- Embed live visualisations using iFrames (anonymous, authenticated or with SSO)
- Build your own applications over the REST API
- Customize BellaDati itself using Client API
- Create own visualisations or extend BellaDati Charts SDK
- Visit:
<http://support.belladati.com/techdoc/Extensibility+of+BellaDati>

Common features

- **Popup windows**
 - With move and close option (like on desktop applications)
- **Inline edit component**
- **User, data set and report links**
 - Active on mouse hover, display the details
- **Errors handling (Faux-pas)**
 - Concurrent access
 - Object not found
 - Operation is not permitted
 - Unknown error, unlikely but possible, it's just a software

User management



Login to BellaDati

- **username format**
 - administrator can assign non-standard usernames
- **password policy**
 - strong password is required – must contain 8 characters and at least one uppercase, one lowercase and one digit
 - account locking feature
- **lost passwords, password reset**
- **configurable automatic registration**
 - ActiveDirectory, LDAP integration
 - Connection to user directories, synchronization with user directories
 - Customizable login/registration forms
- **logout**
 - **by default you stay logged in until you logout or close browser window**
 - configurable timeout

User management

for domain administrators only

- **Create and manage**
 - Usernames are unique
- **Bulk import from CSV, including groups assignment**
- **Delete users**
 - Re-associate owned data sets and reports to existing user
- **Activate/deactivate users, set expiration date**
- **Unlock locked accounts**
- **Send password change request**
- **User login activity overview**
- **Access to list of user reports**

User profile

- **Preferred language settings**
 - EN, CZ, SK, TU, ZH, JA, PO, KO, SP, DU
 - Continuously improved and extended
- **Time zone settings**
 - the domain time zone by default
- **Password changing**
- **Chart display technology option**
 - Leave auto for most cases
 - SVG/VML is supported by most browsers – Chrome, Firefox, Internet Explorer 7, Opera, Safari
 - Flash has limited support for new charts
- **Hints invocation settings**
- **Date/time and numbers format settings**
 - Takes domain settings by default

User groups

- **Better users organization**
 - e.g. departments, analysts, managers
- **Group specific roles**
 - Inherited by all group members
 - You can use groups in data sets, reports and dashboards

Permissions model

Domain admin

- Users management
- Domain management
- Application settings
- Has read/write access to all dashboards, reports and data sets
- Data manager and report editor

Data manager

- Data sets management
- Imports data
- Defines data connectors
- ETL
- Sharing
- Can't create report

Report editor

- Creates the report
- Define the entire content of the report
- Access to shared data sets
- Can't create data set

All users

- Access to all shared reports and dashboards
- Create own dashboard

Domain



Domain



Domain

Users

Data sets

Reports

Dashboards

- All users, data sets, reports and dashboards are associated with single domain
- All roles and permissions has always the domain scope
- Cross domain sharing available

Domain

- **Customizable look & feel**
 - Logo, colors, fonts, login page and emails through customized style sheet,
- **Date time format settings**
 - Using standard y/m/d H:m patterns
 - Applicable for entire domain
- **Numbers format**
 - Decimal & grouping separator
- **Time zone & language settings**
- **Basic usage statistic**
- **External sharing control**

Domain

- **Re-index and cleanup functions**
- **Backup & Restore**
 - In form of XML metadata file
 - Includes all data sets, reports and dashboards
 - Useful for migrations
- **oAuth settings (open authentication standard)**
 - Provides the authentication details for REST communication
 - Used by BellaDati Mobile mobile extension

Q&A

