



Installing BellaDati on Windows

 This page will show you step by step how to install BellaDati on 64-bit Windows.

 Installer supports **Windows 8.1 and newer**.

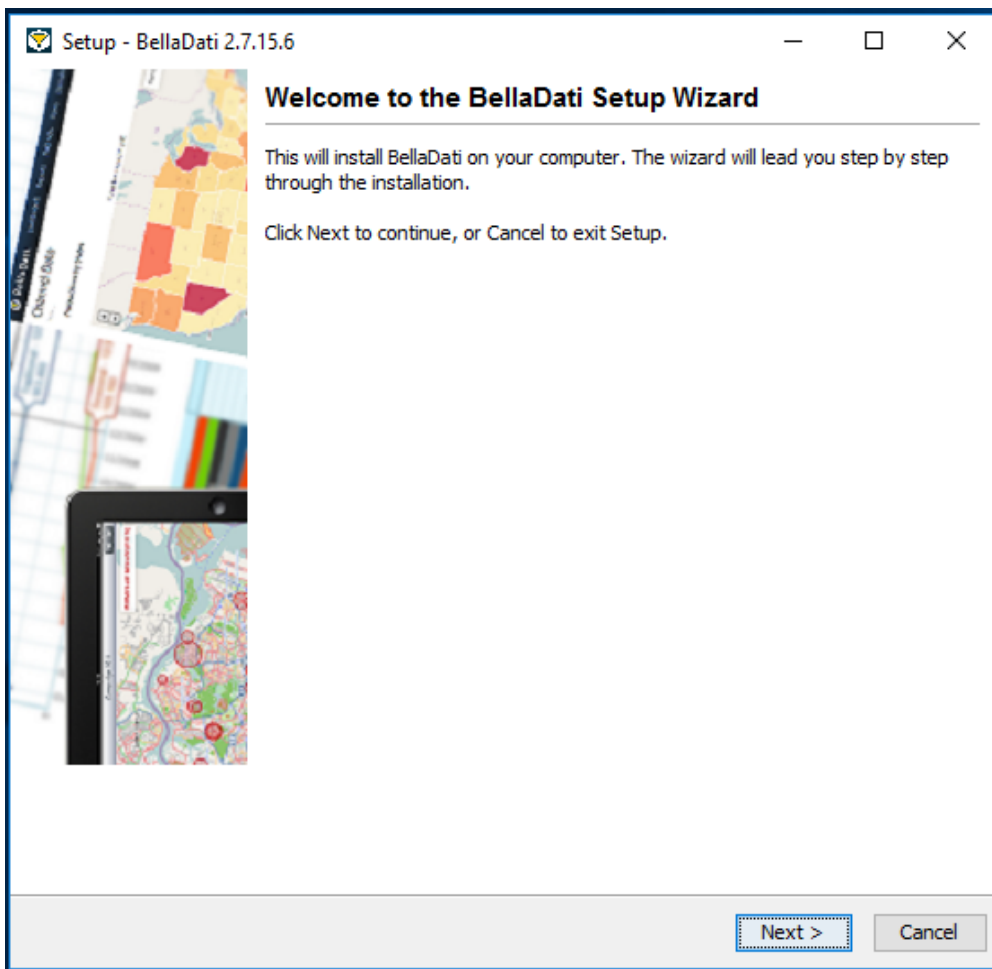
Before You Begin

Please read the following important notes before you begin installing BellaDati:

- You need to have successfully downloaded the BellaDati Windows installer from the [BellaDati website](#).
- Check that your machine meets (at least) the [minimal system requirements](#).
- Check that default ports reserved for BellaDati (4848, 8080, 8181, 5432) are available and not used by any other application.

1. Welcome and Information

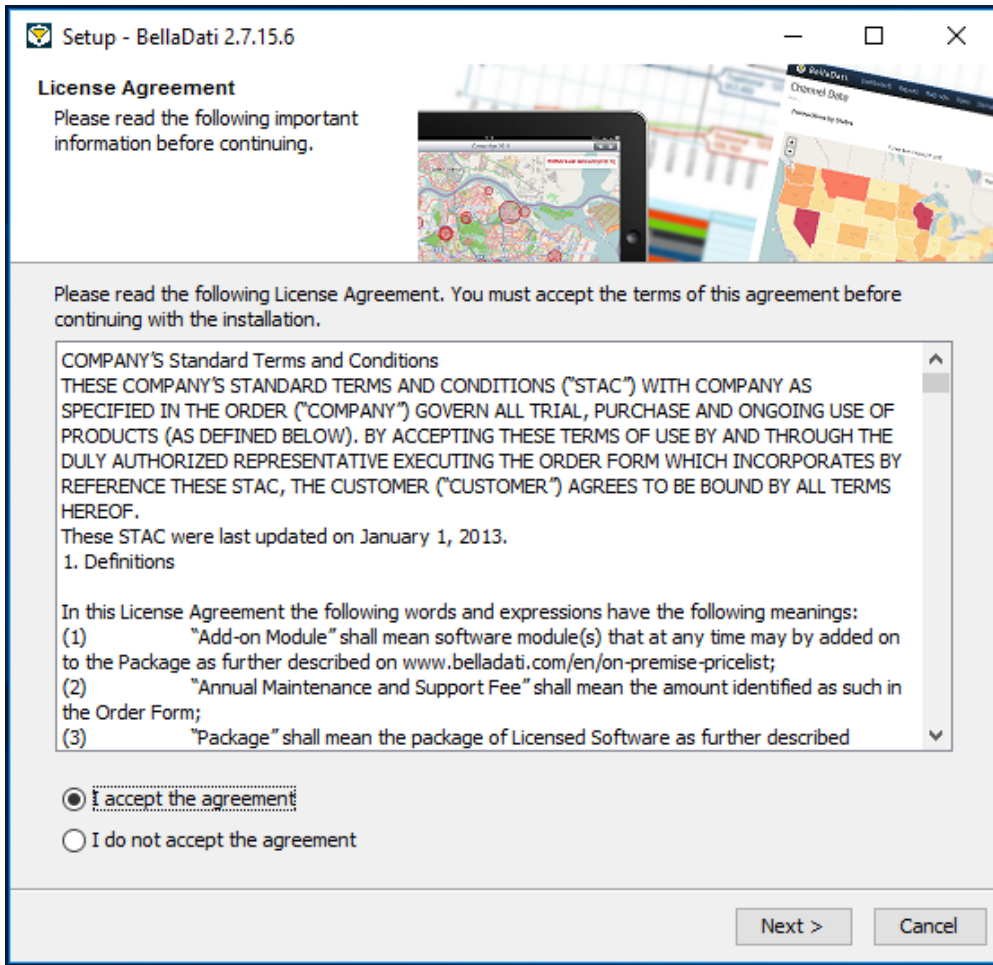
This window will check your machine against the [minimal system requirements](#). Upgrade to a higher-performance machine in case your configuration does not meet the criteria, to avoid experiencing a decreased performance of BellaDati.



Click **Next** to proceed with the installation.

2. License Terms

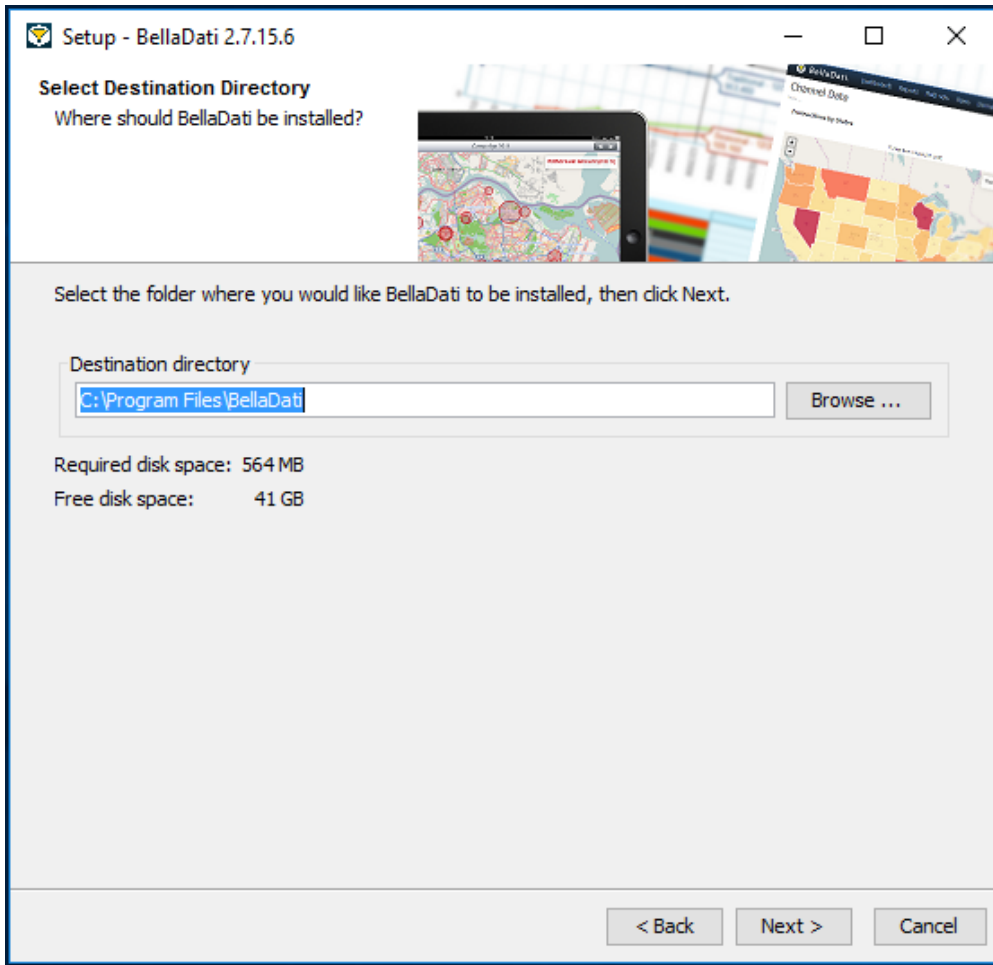
Read and **Accept the license agreement**.



Click **Next** to proceed with the installation.

3. Select Destination Directory

By default, BellaDati is installed into a predefined installation directory. Click browse to navigate to different folder if you want to modify these settings. BellaDati will check your free disk capacity to ensure enough space is available.



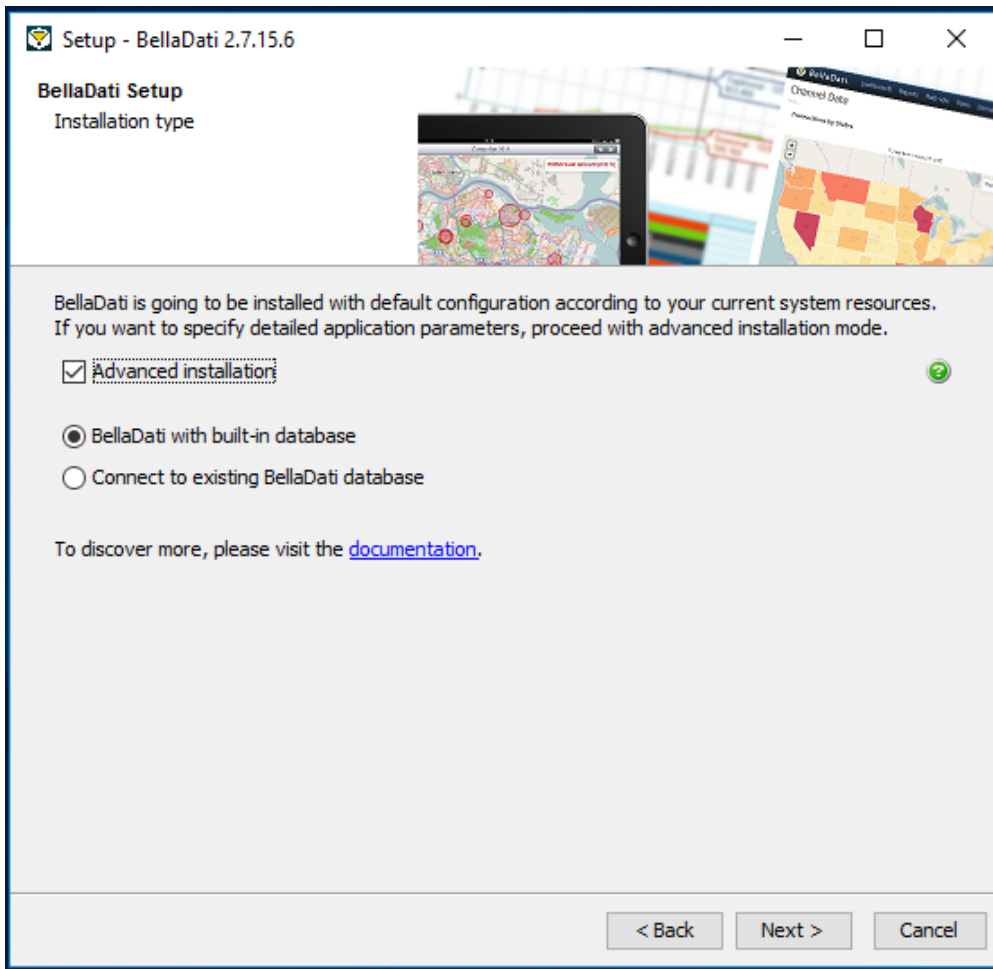
Click **Next** to proceed with the installation.

4. Select Installation Type

Check **Advanced Installation** if you want to specify custom settings. Leave it blank to perform installation with default settings.

In advanced settings BellaDati allows you to connect to existing database or create one for you automatically. Choose the desired action and continue to:

- 5.1 Installing with a built-in database
- 5.2 Connecting to an existing database. Select only if you already have a PostgreSQL database installed or you want to use MSSQL database.



Click **Next** to proceed with the installation.



Proceed with the following steps only if you checked **Advanced Installation**. Otherwise jump to step 7.

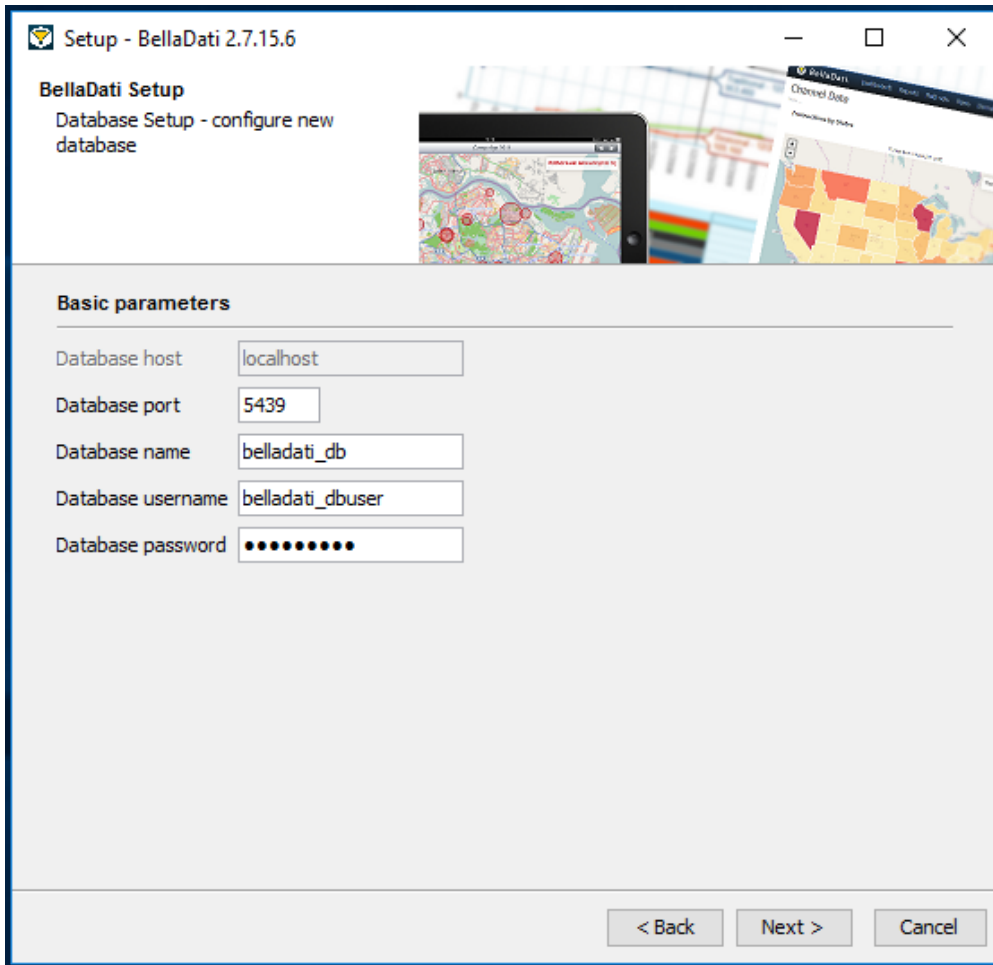
5.1. Installing with a Built-in Database

Approve or edit the following default settings:

- **Database port.** Make sure this port is not used by other applications or services.
- **Database name**
- **Database username**
- **Database password**



Leave the default values if you are unsure about the configuration.



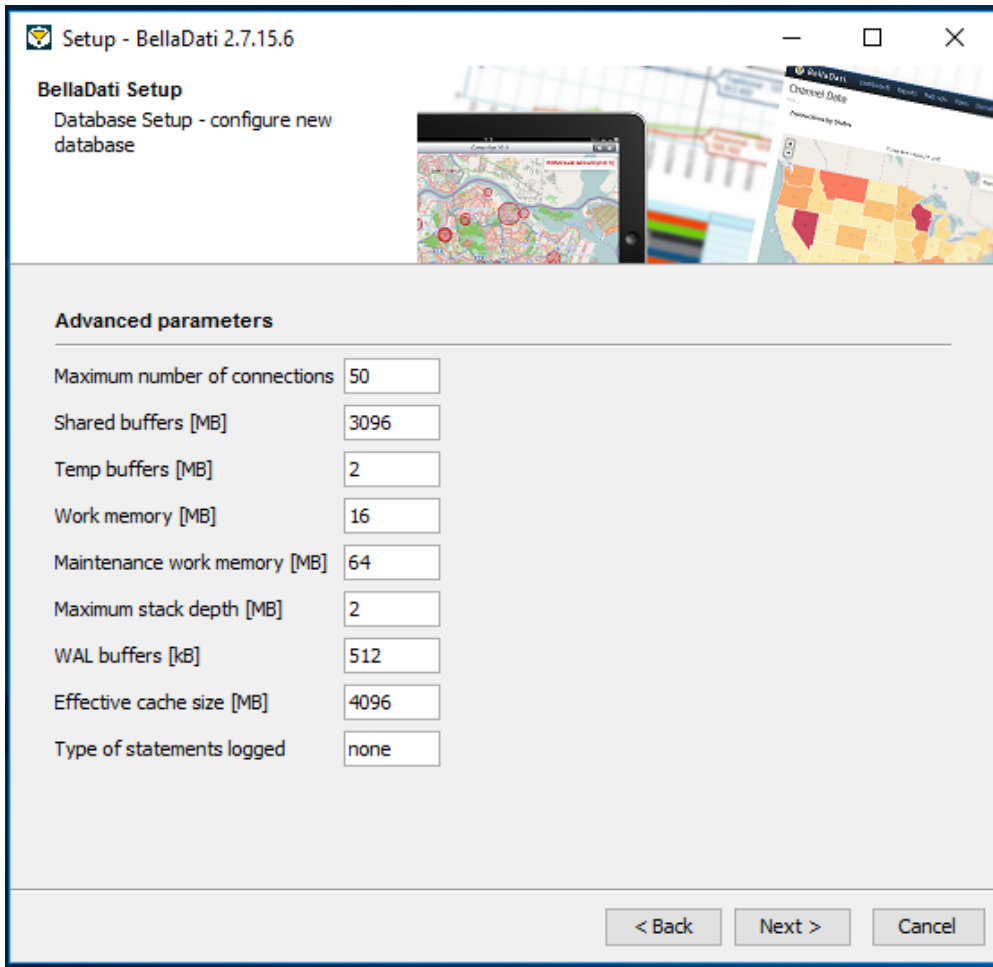
Click **Next** to proceed with the installation.

Approve or edit the following advanced default settings:

- **Maximum number of connections**
- **Shared buffers**
- **Temp buffers**
- **Work memory**
- **Maintenance work memory**
- **Maximum stack depth**
- **WAL buffers**
- **Effective cache size**
- **Type of statements logged**



Please see [our documentation](#) for more details. Leave the default values if you are unsure about the configuration.



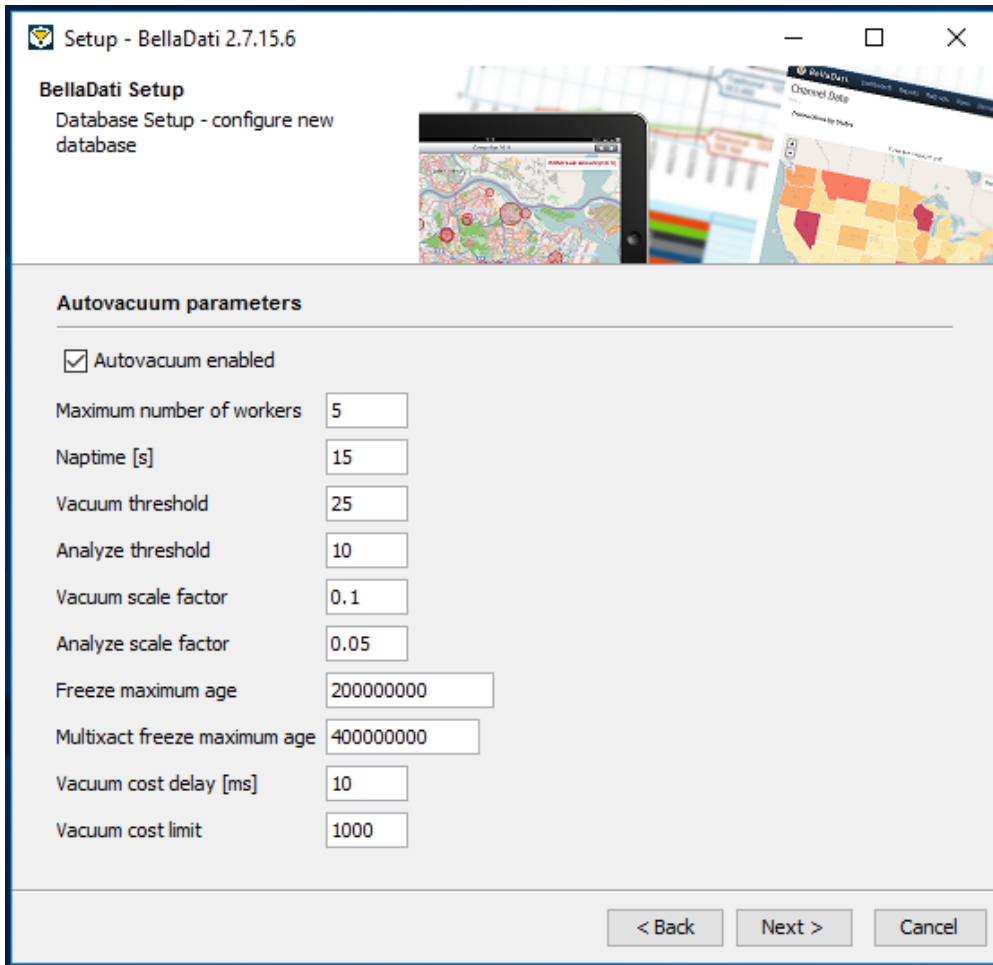
Click **Next** to proceed with the installation.

Approve or edit the following autovacuum default settings:

- **Maximum number of workers**
- **Naptime**
- **Vacuum treshold**
- **Analyze treshold**
- **Vacuum scale factor**
- **Analyze scale factor**
- **Freeze maximum age**
- **Multixact freeze maximum age**
- **Vacuum cost delay**
- **Vacuum cost limit**



Please see [our documentation](#) for more details. Leave the default values if you are unsure about the configuration.




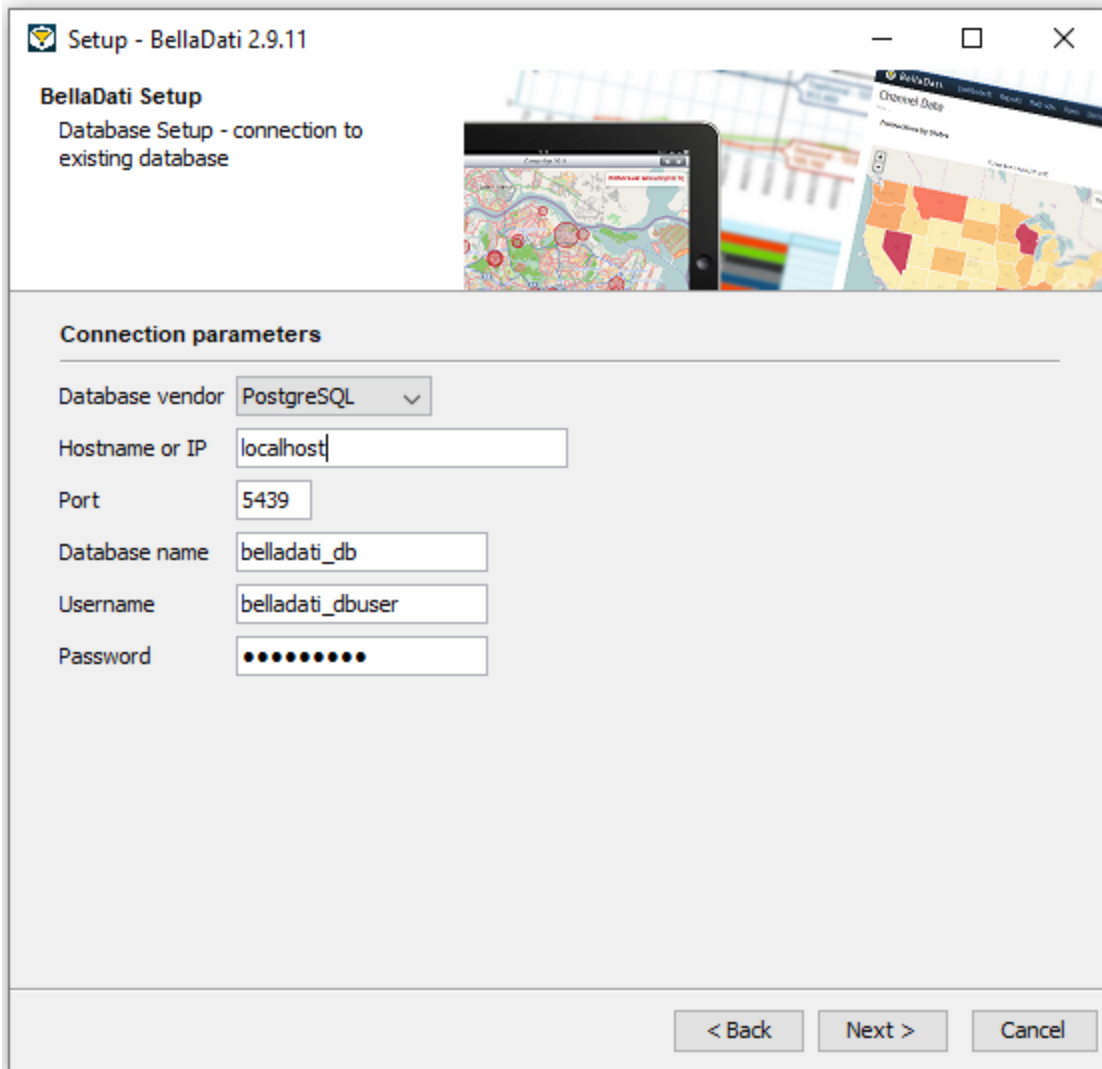
Click **Next** to proceed with the installation.

5.2. Connecting to an Existing Database

Specify the following connection parameters:

- **Database vendor (PostgreSQL or MSSQL)**
- **Hostname or IP**
- **Port**
- **Database name**
- **Username**
- **Password**

 Ask your database administrator if you are unsure about these settings.



Click **Next** to proceed with the installation.

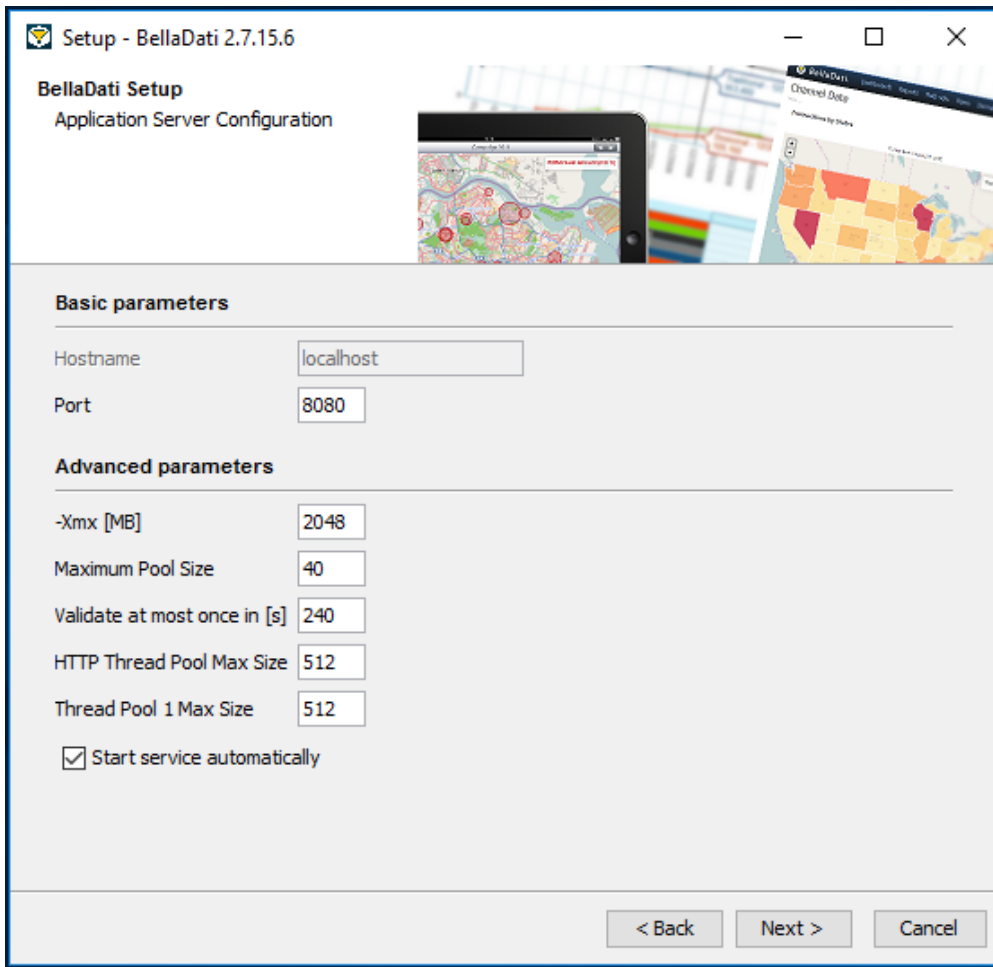
6. Application Server Parameters

Approve or edit the following default settings:

- **Port.** Make sure this port is not being used by other applications or services.
- **Xmx**
- **Maximum Pool Size**
- **Validate at most once in**
- **HTTP Thread Pool Max Size**
- **Thread Pool 1 Max Size**

✔ Please see [our documentation](#) for more details. Leave the default values if you are unsure about the configuration.

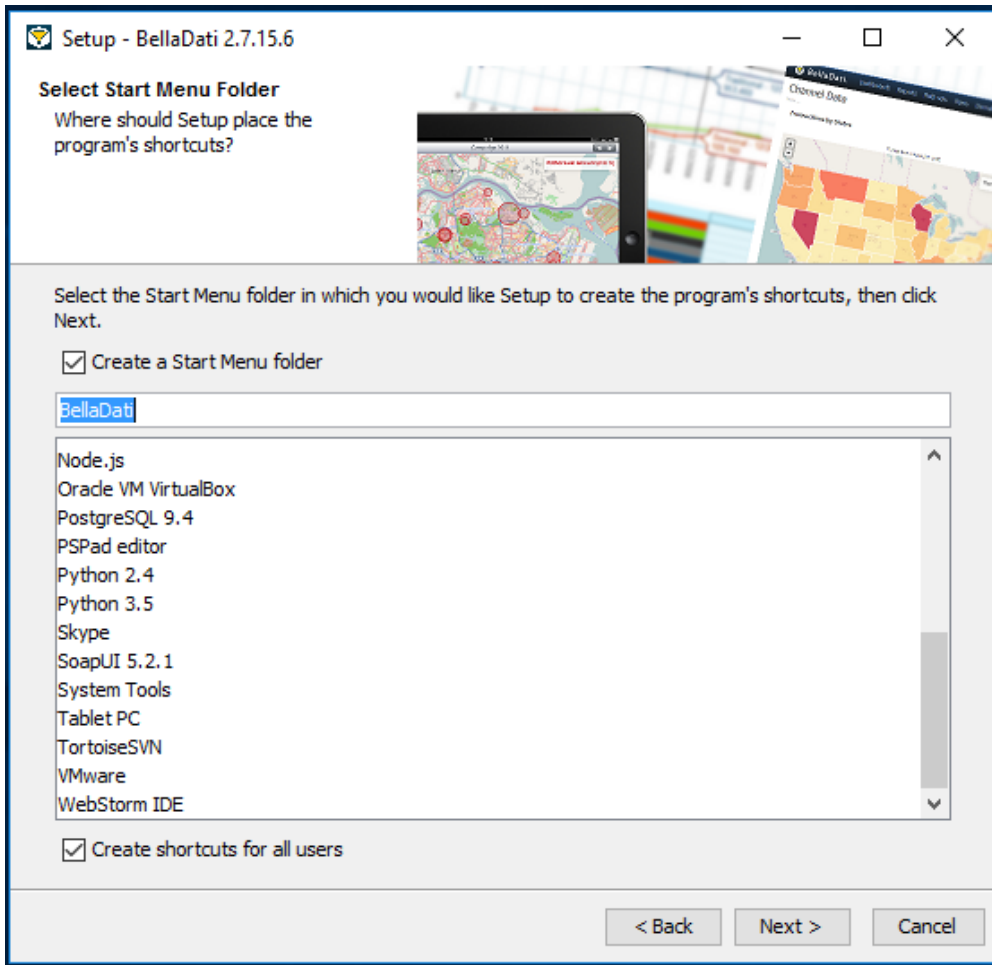
✔ Check **Start service automatically** to have BellaDati up and running right after the installation.



Click **Next** to proceed with the installation.

7. Start Menu Folder

Approve or edit the name of the start menu folder.

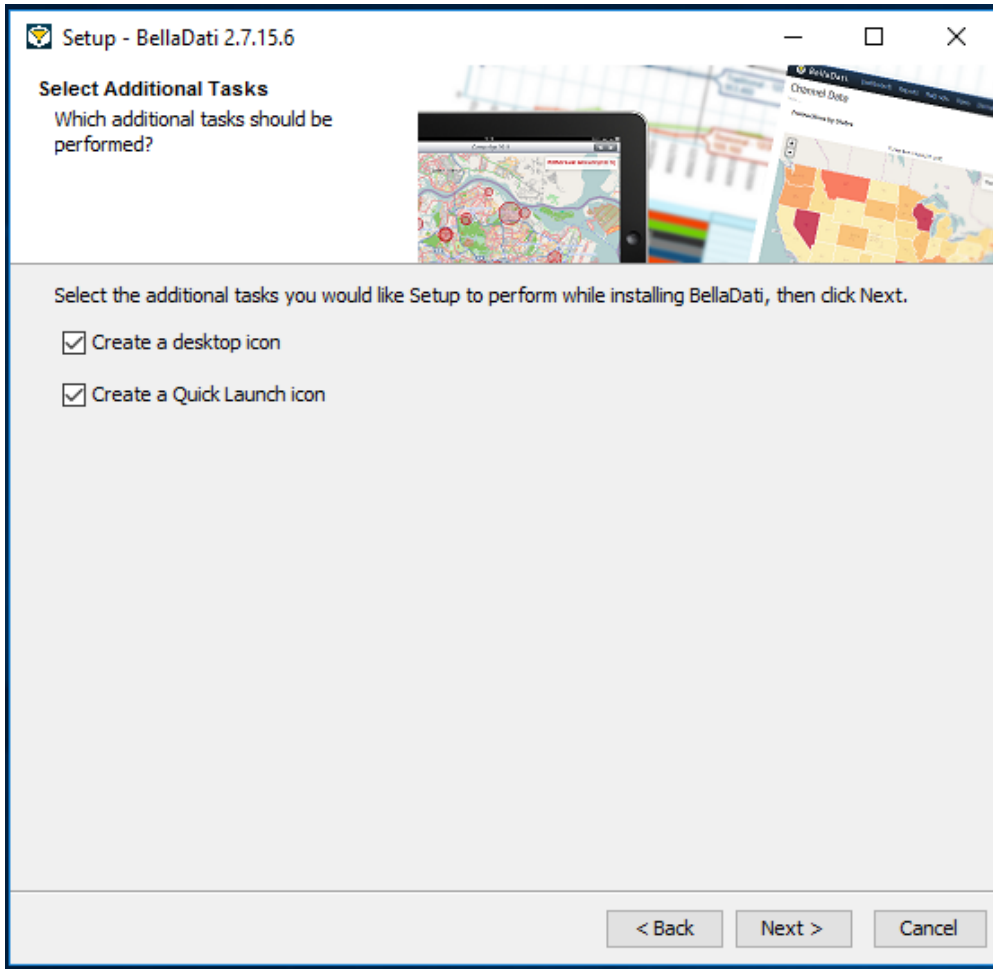


Click **Next** to proceed with the installation.

8. Additional Tasks

Select additional options:

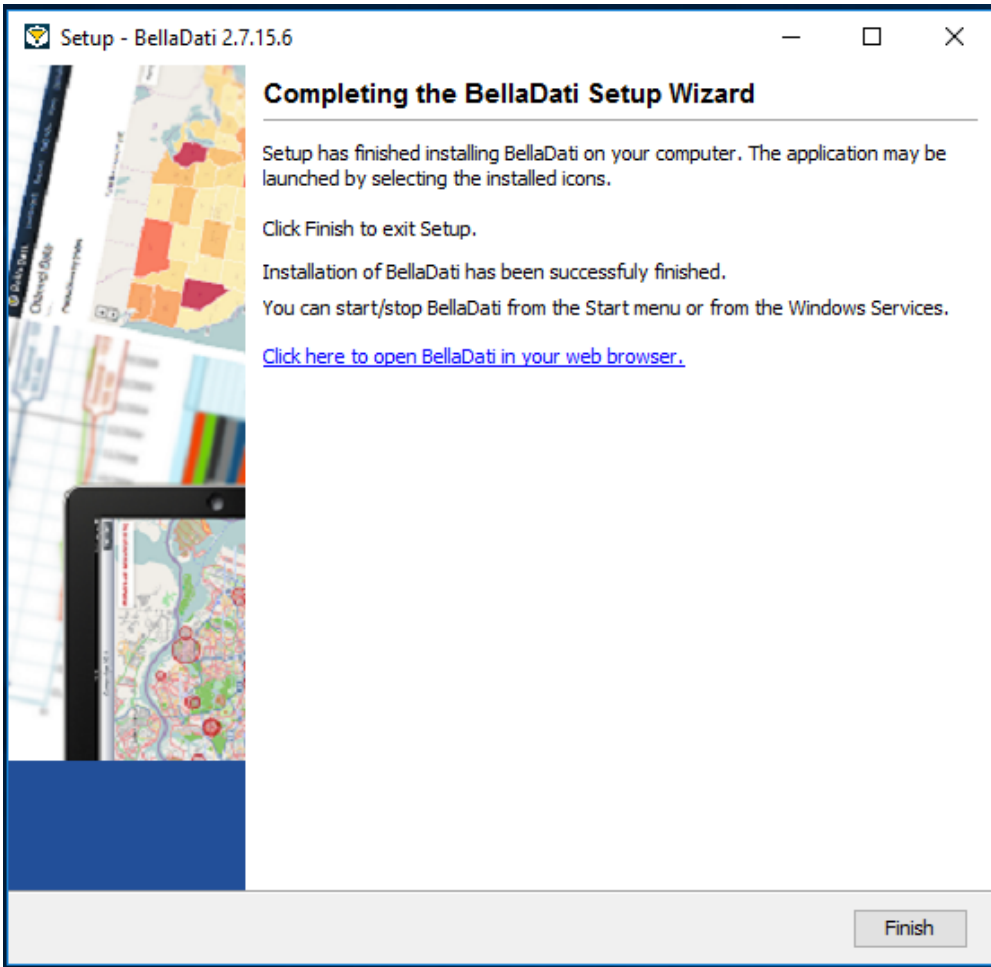
- **Create a desktop icon**
- **Create a Quick Launch icon**



Click **Next** and wait while BellaDati is installed on your computer.

9. Finishing Installation

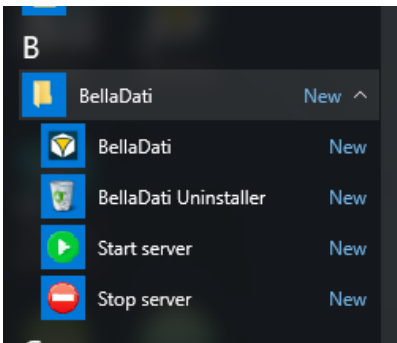
The installation is complete. Close the window or click the link to open BellaDati in your web browser.



It could take some time to start BellaDati for a first time. Then continue with the BellaDati Setup Wizard.

10. Troubleshooting

- If you have disabled automatically starting the server in the web server configuration, or starting the server failed, run it manually from Windows Start Menu or Windows Services.



- To open BellaDati after the installation is complete, point your browser to <http://localhost:8080>. This is the default URL, which may differ depending on the data you entered in step 6 of the installation.
- If you have any problems during installation, please try to complete installation (retry or ignore errors) and then send us following log file:
 - `<installation-directory>\.install14j\installation.log`