

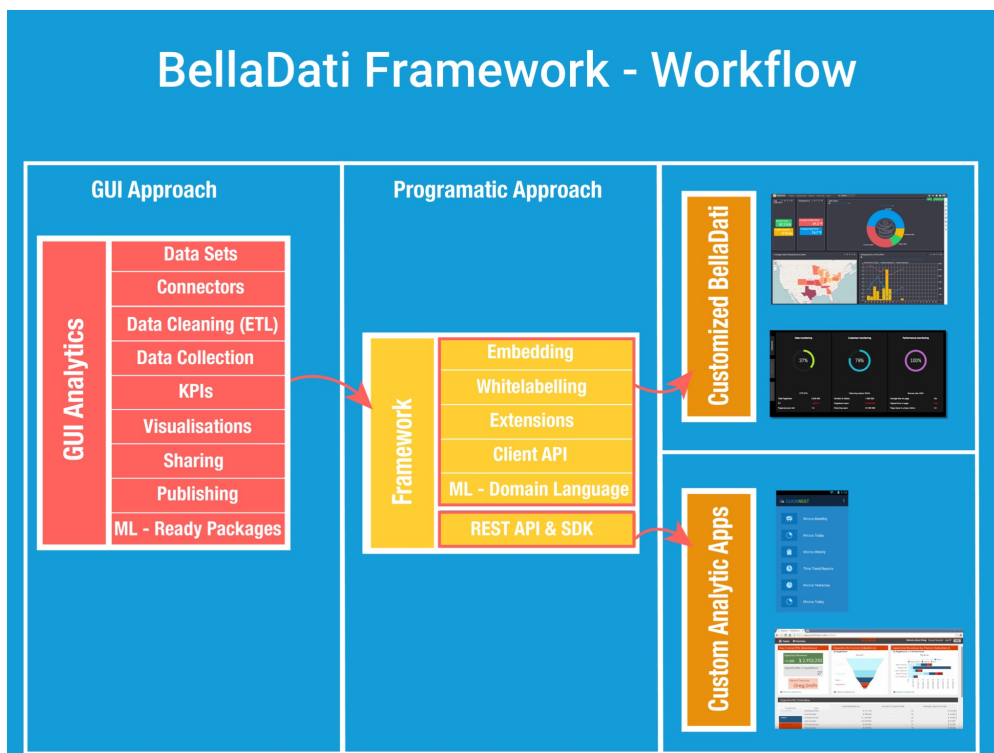
BellaDati Developers Network

About Framework

BellaDati framework combines GUI driven and Programmatic driven principles. That allows you very effectively build your own analytics solutions. You can use one approach or combine following tools together. Keep in mind, that developer can use APIs to

- Data cleaning and ETL
- BIG DATA data warehouse
- Deep analytics (Machine Learning and Statistics)
- Easy to use AGILE BI
- SDK, APIs framework (GUI and coding combination)
- IoT Data Collector platform
- GEO and other data visualizations

BellaDati Analytics IoT framework workflow



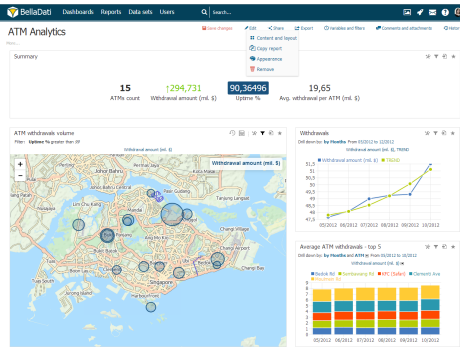
[Keep on reading or jump directly to developer tutorials](#)

3 patterns for development explained

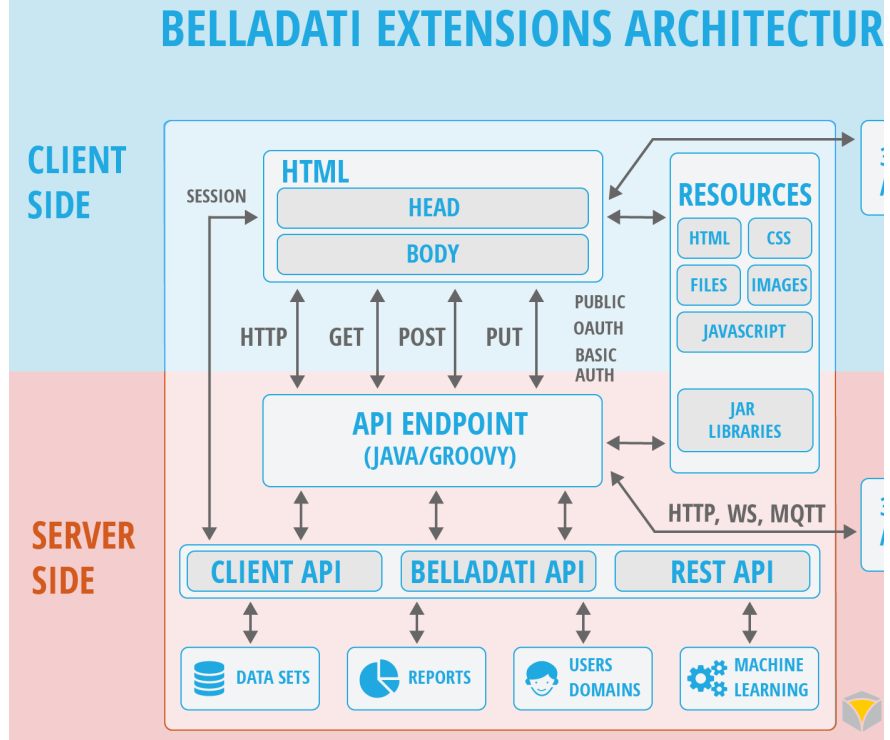
GUI DRIVEN

CLIENT API(Web Client) & EXTENSIONS API (Server Side)

Solution is build in BellaDati GUI (charts,dwh,data cleaning & transformation, machine learning and white-labeling with css or less).



Your app is pure web client living within BellaDati Clientside scope or app made of Java living Serverside scope combined with web client technology stack.



Installation Guide

The [BellaDati Installation Guide](#) is for people who are installing BellaDati on-premise for the first time. Check the [system requirements](#), then download and install BellaDati.

- ✔ You can use the [Windows](#) or [Mac](#) installers or [BellaDati Standalone](#) to easily install BellaDati on almost any operating system.

Developer Resources

These resources are for software developers who want to create their own applications using the BellaDati [REST API](#) or prepare scripts for advanced data [transformation](#). Take a look at the [Developer Tools](#) for more information.

Update Guide

The [BellaDati Update Guide](#) is for people who are updating their instance of BellaDati on-premise. Start by reading the latest [Release Notes](#) for the version to which you are updating, then download BellaDati and follow the main [Update Guide](#).

- ✔ You can download the [BellaDati documentation](#) in [PDF](#) and [HTML](#) formats.