

Whitelabeling BellaDati



You need to have **Domain administrator** role assigned to change BellaDati's design. In multi-domain configurations, you must have the **Global admin** role to change the Global appearance settings.

On this page:

BellaDati allows you to change:

- Logos
- Favicon
- Top and bottom menu background and text color
- Application background color
- Custom HTML and stylesheet
- Custom Login page

- [Global appearance settings](#)
- [Changing look and feel of a domain Results](#)
- [Adding Custom HTML](#)
- [Custom Login page](#)
- [BellaDati Dark theme](#)
- [Custom email template](#)
- [Next Steps](#)



See the detailed whitelabeling manual [here](#).

Global appearance settings

Global appearance can be changed by Global admin from the Configuration. To learn more, [click here](#).

Changing look and feel of a domain

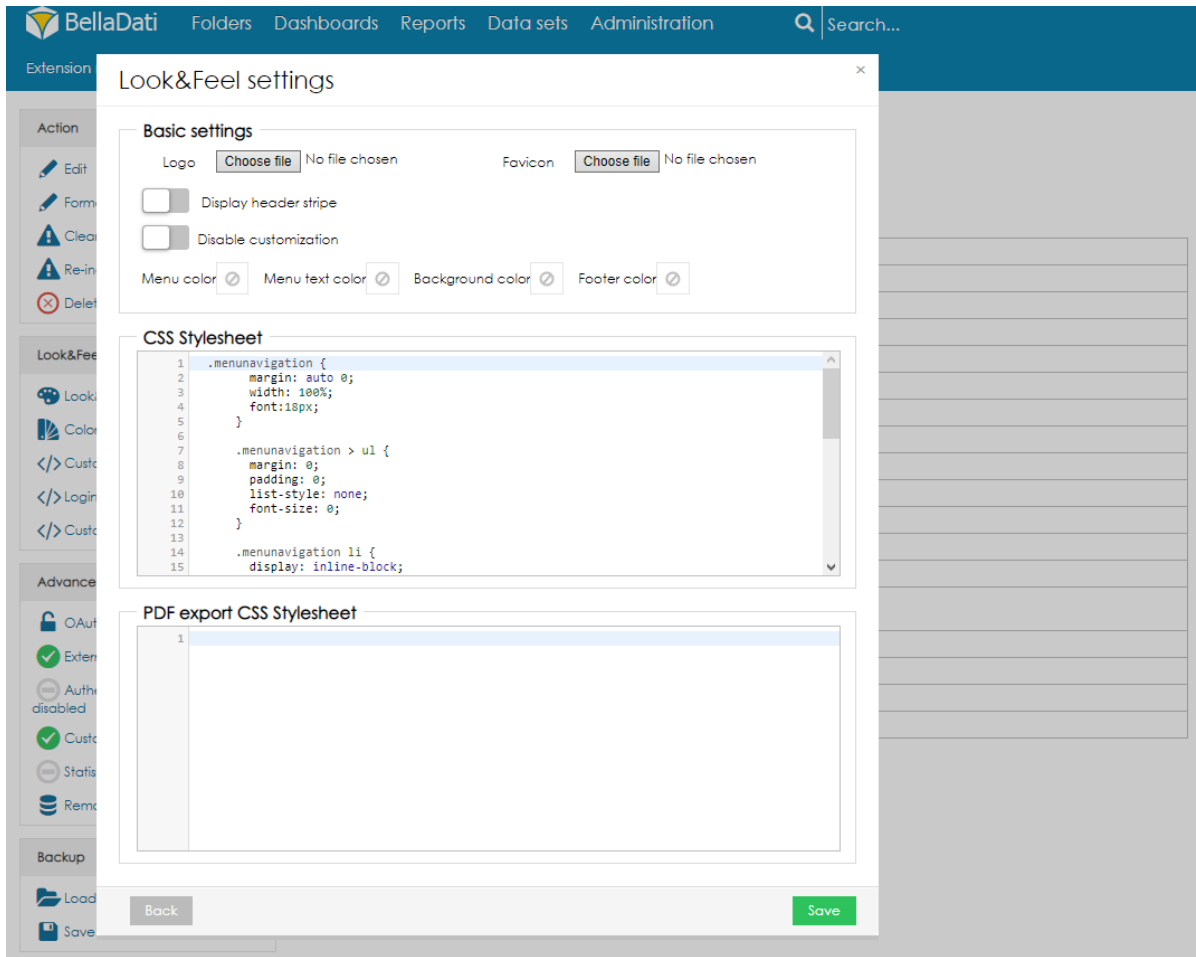
Go to **Domain** and select **Look&Feel Settings** in left navigation bar.

The screenshot shows the BellaDati configuration interface. The top navigation bar includes 'BellaDati', 'Dashboards', 'Reports', 'Data sets', 'Users', 'Domains', and 'Settings'. A search bar is also present. The main content area is titled 'Training-Demo' and includes a description: 'Demo domain to use during training for customization and SDK/API use.' and a custom login URL: 'https://service.belladati.com/customlogin/6564'. The interface is divided into several sections:

- Action:** Edit, Format settings
- Look&Feel settings:** Look&Feel settings (highlighted with a red box), Custom HTML, Login page custom HTML
- Advanced settings:** Switch to domain, Predictions library disabled, Data collecting disabled, External web sharing enabled, Custom login page enabled, Cleanup domain, Reindex reports, Reindex data sets, Delete content, Delete domain
- Backup:** Load XML backup, Save XML backup
- Basic info:** Number of users (2), Data managers count (1), Report editors count (1), Active (Deactivate), Active from (Jan 29, 2014), Valid to, Maintenance period, Max disk usage (MB), Max rows count, Maximum users count, Maximum data managers, Maximum report editors, Max user dashboards per users, Max reports count per user, Max data sets count, BellaDati Mobile enabled (false), Min import period, Data sources disabled (false), All imports disabled (false)
- Usage statistics:** Number of data sets (2), Number of reports (7), Number of dashboards (2), Disk space used (392 KB), Rows count (938)
- OAuth Settings:** Consumer key (techKey), Consumer secret (techSecret), Callback URL, Allow xAuth? (false)
- Configuration:** Preferred language (Use browser default settings)

From the Look&Feel window, it is possible to change the following settings:

- Logo displayed in the top left corner
- Favicon
- Menu color
- Menu text color
- Background color
- Footer color

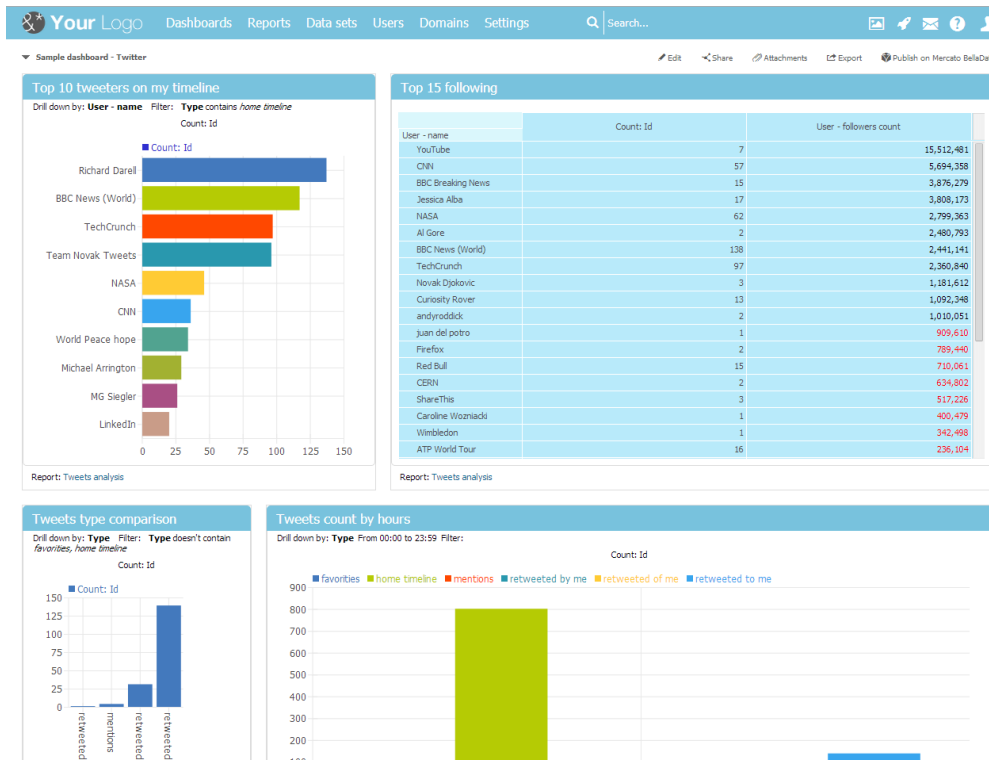


✔ While changing stylesheets we recommend to use Firefox's Firebug or Chrome's Developers Tools to identify used selectors.

✔ Try our sample [custom stylesheet](#)

Results

Eventually, results may look like as follows:



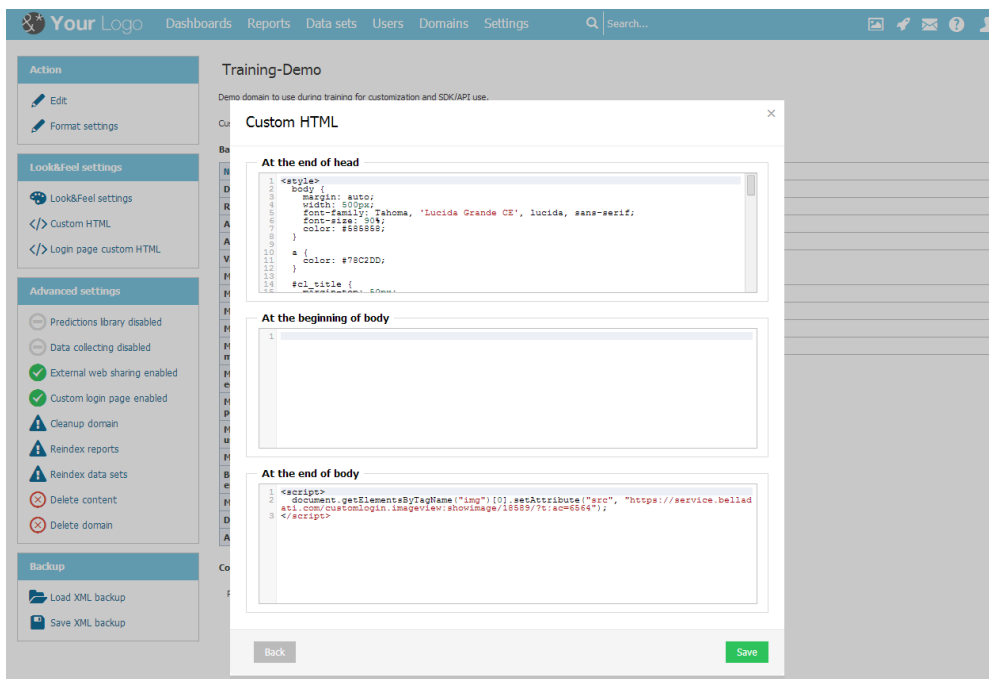
Adding Custom HTML

BellaDati allows you to place **custom HTML** at:

- the end of the head
- the beginning of the body
- the end of the body

Go to **Domain** and select **Custom HTML** in left navigation bar.

Place your HTML into appropriate text box.



Custom Login page

Enable custom login and edit the HTML for your customized login page.

Training-Demo
Demo domain to use during training for customization and SDK/API use.
Custom login: <https://service.belladati.com/customlogin/6564>

Basic info

| | |
|-------------------------------|-------------------------|
| Number of users | 2 |
| Data managers count | 1 |
| Report editors count | 1 |
| Active | Deactivate |
| Active from | Jan 29, 2014 |
| Valid to | |
| Maintenance period | |
| Max disk usage | MB |
| Max rows count | |
| Maximum users count | |
| Maximum data managers | |
| Maximum report editors | |
| Max user dashboards per users | |
| Max reports count per user | |
| Max data sets count | |
| BellaDati Mobile enabled | false |
| Pin import period | |
| Data sources disabled | false |
| All imports disabled | false |

Usage statistics

| | |
|----------------------|------|
| Number of data sets | 3 |
| Number of reports | 8 |
| Number of dashboards | 4 |
| Disk space used | 2 MB |
| Rows count | 1915 |

OAuth Settings

| | |
|-----------------|------------|
| Consumer key | techKey |
| Consumer secret | techSecret |
| Callback URL | |
| Allow xAuth? | false |

Advanced settings

- Predictions library disabled
- Data collectng disabled
- External web sharing enabled
- Custom login page enabled
- Cleanup domain
- Reindex reports
- Reindex data sets
- Delete content
- Delete domain

Configuration

Preferred language: Use browser default settings

Here is the result:

Logout successful

Username

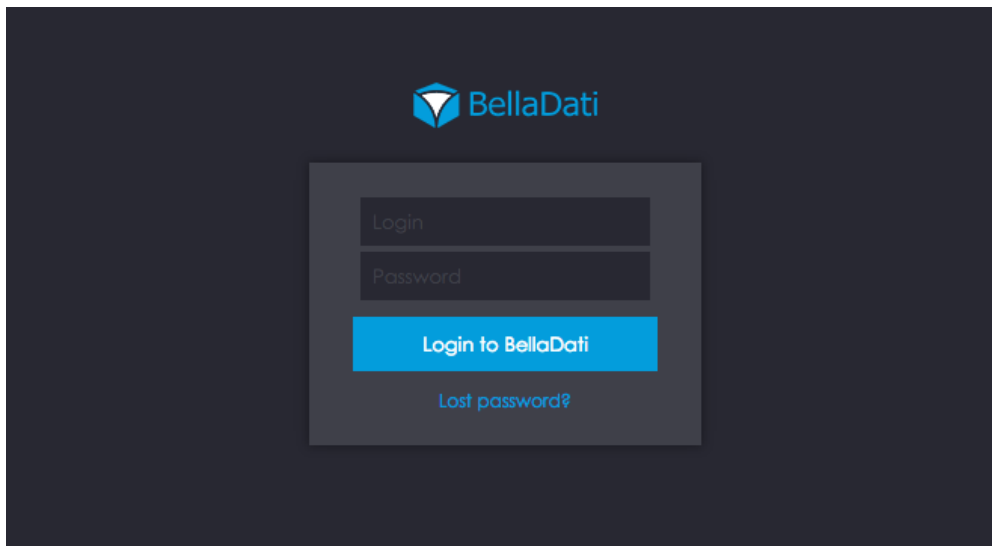
Password

[Login to BellaDati](#)

[Lost password?](#)

BellaDati Dark theme

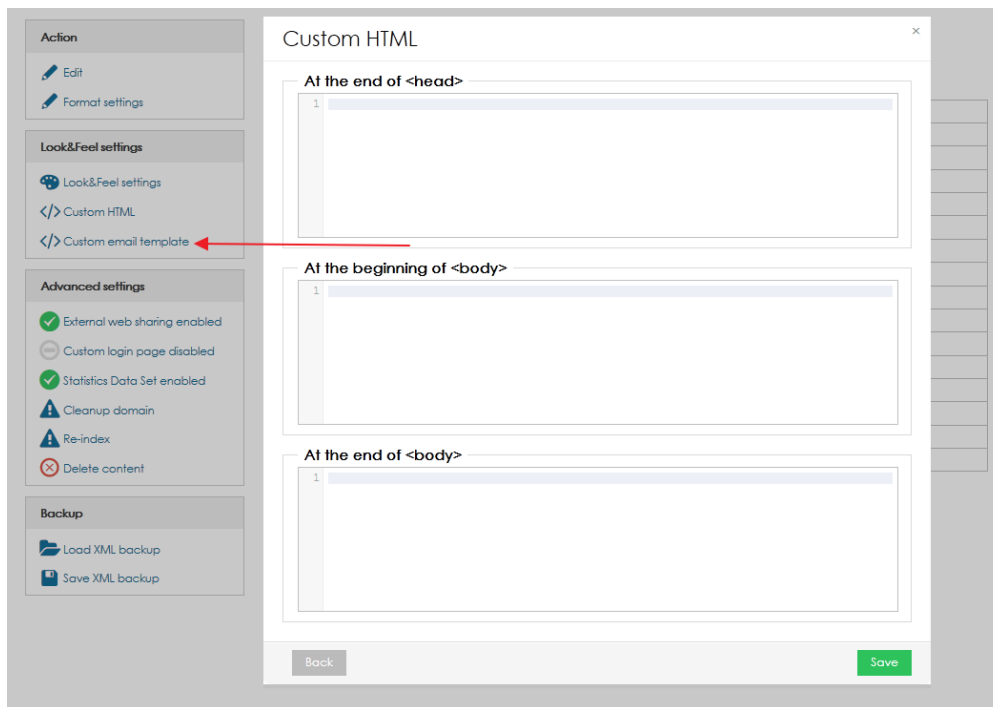
Try our [dark theme](#) and [dark login](#) stylesheet!



Custom email template

There are two ways how to customize email content.

1. If you want to set it for whole BellaDati installation, login as super admin and go to Settings - Configuration - Look & Feel box.
2. For one domain - login as domain admin, go to Manage Domain - Look & Feel box on left side of screen. This also overrides settings for whole installation.



For both options there are three parts which you can customize:

Email template - end of head - if you want to customize head of the template, add you code here.

Email template - beginning of body - if you want to override the default header, add you code here.

For example logo of your company can be added to header with this HTML code:

Email template - end of body - if you want to override the default footer, add you code here.

For example some information about your company can be added in footer: